

Clover Health Weekly Update

Enroll Members

MARCH 2022						
Monday	Tuesday	Wednesday	Thursday	Friday	Saturday/Sunday	
	1	2 11:00am-12:00pm Enrollment REGISTER	3 11am-12:00pm Broker Orientation REGISTER	4	5/6	
7	8 11am-12:00pm Why Sell Clover? REGISTER	9 11:00am-12:00pm Broker Portal REGISTER	10	11	12/13	
14	15	16 11:00am-12:00pm Enrollment REGISTER	17 11am-12:00pm Broker Orientation REGISTER	18	19/20	
21	22 11am-12:00pm Why Sell Clover? REGISTER	23 11:00am-12:00pm Broker Portal REGISTER	24	25	26/27	
28	29	30 11:00am-12:00pm Enrollment REGISTER	31 11am-12:00pm Broker Orientation REGISTER			

NOTE: All times Eastern

Clover Health

Join This Week's Trainings!

Enrollment

Date: Wednesday, March 2nd
Time: 11AM

Broker Orientation

Date: Thursday, March 3rd
Time: 11AM

Register Now!



Broker Commissions & The Broker Portal

Log into the broker portal to see your commissions statements (if applicable) and your Book of Business

- Reminder:** If you are being paid directly by Clover Health - you **must** supply your banking information in your broker portal profile
- Do you have any questions or concerns regarding any payments?
 - Please fill out [this form](#) for assistance

Clover Health Broker Portal

Within 90 days...

At this point Clover has engaged with your client. Now's the time to ensure they are engaging with their healthcare providers.



CHECK IN on them and their health. Have they been to see their doctor? Have they filled their prescriptions?



TALK about the importance of preventive care. For example...

- Annual Wellness Exam
- Cardiovascular Disease Screening
- Blood Pressure & Cholesterol
- Bone Density Test
- Blood Glucose Screening
- Mammogram
- Colorectal Screening
- Flu/Covid shots
- Dental and/or Vision Exams



REMIND them of SEP opportunities that might help their friends and family. Ask them to have them contact you for your help if needed.



Client Retention Best Practices

Ensure your clients are engaging with their healthcare providers. Utilize our [Provider Search](#) to find an in-network doctor, hospital, or facility with Clover Health.

Provider Search



Clover Health Preferred Pharmacies

As you know, Clover members pay a lower cost share when they go to a preferred pharmacy. Some of the biggest pharmacy chains, such as CVS, Walgreens, Walmart, and Duane Reed to name a few, are part of the Clover preferred pharmacy network!

But, pharmacy networks change periodically so we wanted to remind you of the importance of using the most up-to-date Pharmacy lookup tool.

So as you work with new clients to meet their needs please use the [Clover Pharmacy Look Up Tool](#) to ensure they know how to take advantage of our preferred pharmacies and low Rx copays.

For those clients who are existing Clover members, use the [Clover Pharmacy Look Up Tool](#) to make sure nothing has changed since their initial enrollment and help them to choose a preferred pharmacy if something has changed.

Clover Health

Find a Pharmacy Near You

Please enter a ZIP code or city and state, and select at least one pharmacy type. All other fields are optional but can help refine your search.

ZIP Code

OR

Address

City

State

Zip Radius

Pharmacy Name (Optional)

Pharmacy Type

Additional Services (Optional)

Preferred Mail Service Network

Emergency Rx

Delivery

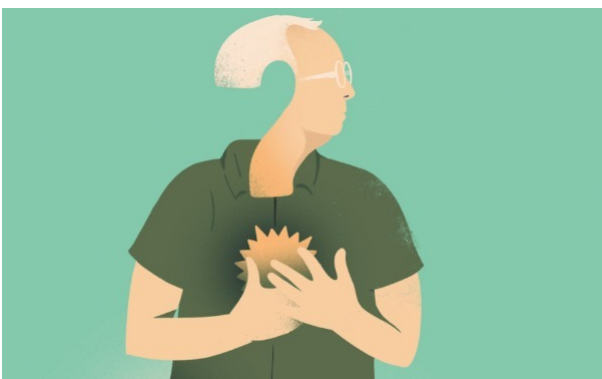
Note: Those members that qualify for LIS or receive state pharmaceutical assistance such as New Jersey's PAAD or PACE in Pennsylvania, will continue to pay their respective copays for their medications regardless of pharmacy.

It is important to note that you must select **'Preferred Retail'** to return Clover's preferred pharmacies in your search.

Pharmacy Look Up

Clover Living: Healthier Together

Clover Living magazine is designed to deliver tips and information about living well, taking care of your body and mind, and understanding Medicare coverage. It's mailed directly to members' homes and providers' waiting rooms. Make sure to stay up to date on the newest issues to keep your clients informed.



Myths and Facts About Heart Disease: What You Should Know

Every year more than 800,000 Americans have a heart attack. That's a scary statistic, but there's good news: Over the past decade we've learned a lot about what causes heart attacks, how to prevent them, and how to treat them.

Learn More



This Week's Clover Health Member Communications

Clover Health conducts member touchpoints throughout the year. We ensure members understand their specific plan, benefits, and answer questions. We hope these touchpoints make our brokers' job easier!

Grocery Benefit

- We have sent outreach letters to members with the grocery benefit, from whom we have no claims for the conditions that make them eligible for this program. If your member receives this letter, please encourage them to have their doctor complete the form provided so that we can ensure they continue to receive this benefit.



Special Election Periods (SEP)

CMS announced special election periods in 3 of Clover Health's service areas, through March 31st, 2022.

Find our more below!

[New Jersey](#)
[Georgia](#)
[South Carolina](#)

Broker Support: We Can Help!

How can you reach Broker Support?

1-855-979-2236 or brokers@cloverhealth.com

Please choose the correct prompt for faster service. Choosing the incorrect prompt will elongate your process.

- Press '1' for Eligibility questions
- Press '2' for Provider Look Up.
- Press '3' for all other questions!

Current Hours: Monday - Friday from 9 am-6 pm ET

Did you miss last week's broker newsletter or have more questions? See our [Broker Newsletter Archive](#), [Broker FAQ's](#) and [Broker Resources](#) on the Clover website.

If you have any other questions, please do not hesitate to reach out to our [local broker team](#) or broker support at brokers@cloverhealth.com / (855) 979-2236

@2021 Clover Health. All Rights Reserved. [Privacy Policy](#).

You have received this email because you have opted in to receive communication from Clover Health.

This email was sent by: %Member_Busname%

%Member_Addr%, %Member_City%, %Member_State%, %Member_PostalCode%, %Member_Country%